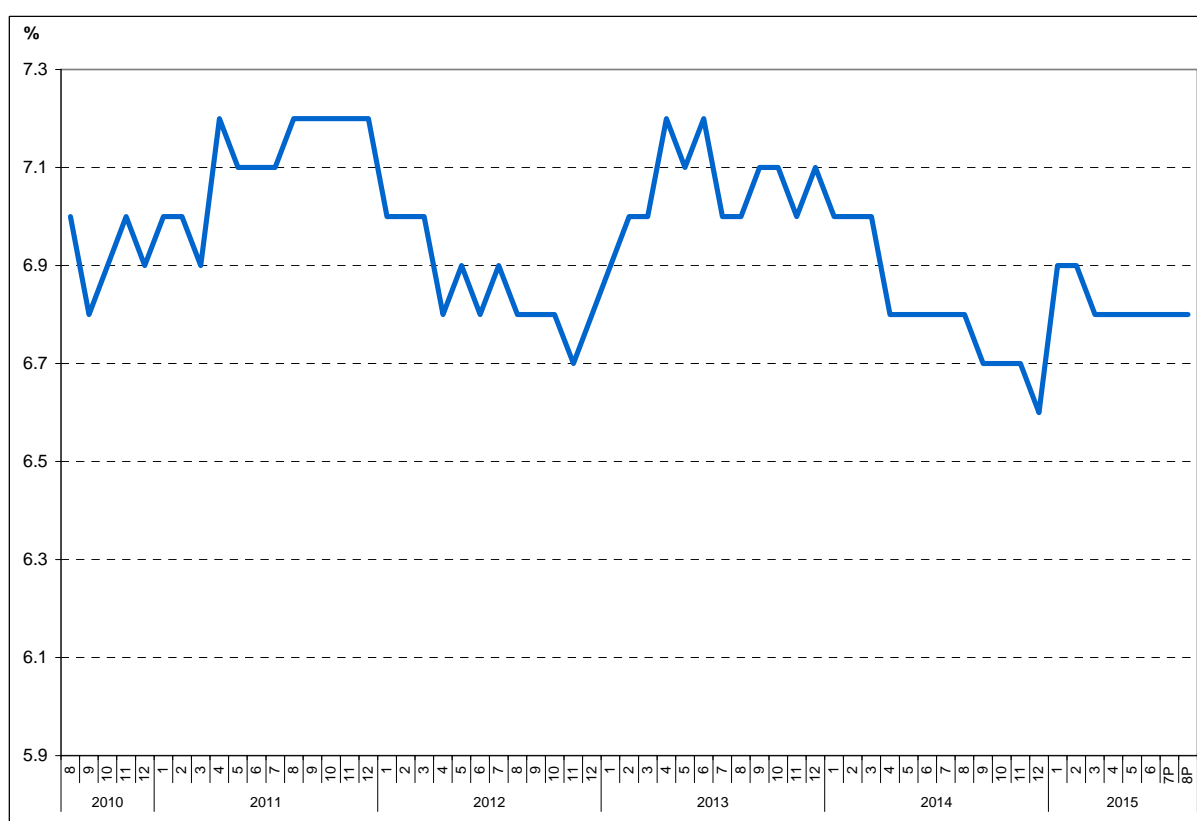


Area: ILO unemployment

In August 2015, the seasonally adjusted unemployment rate was estimated at 6.8%

- Unemployment rate in August 2015 had the same level as the one recorded for the previous month.
- Men's unemployment rate is higher than that of women with 2.2 percentage points.

Evolution of the unemployment rate



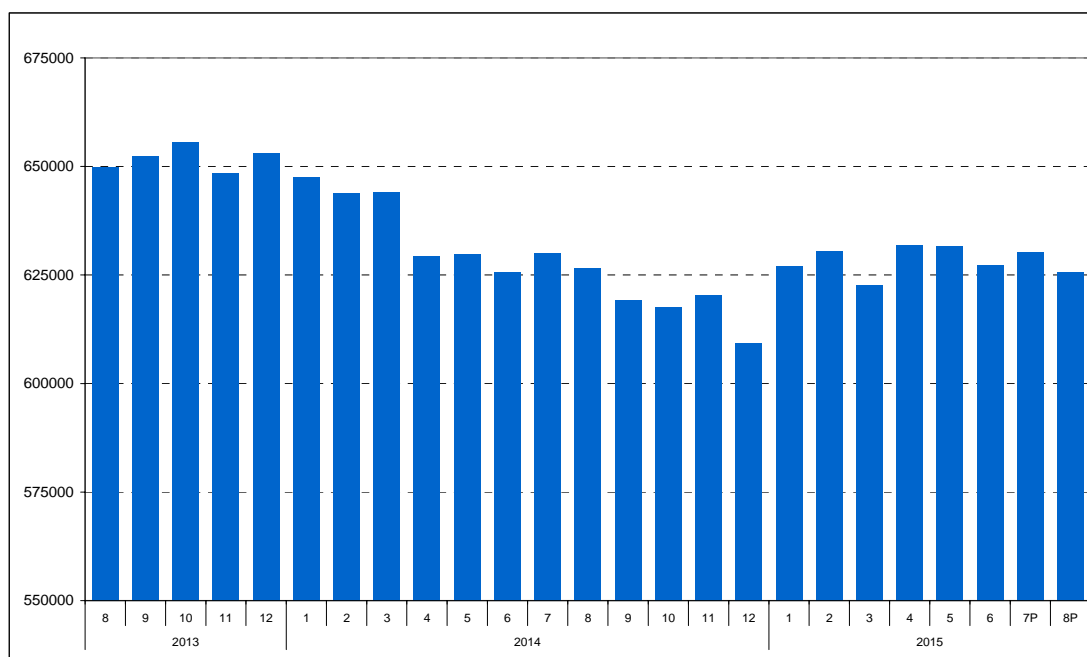
^P Provisional series; will be revised at the end of November 2015 (see point 6 in [Methodological explanations](#)).

[Chart data \(xls\)](#)

Seasonally adjusted unemployment rate was 6.8%, at the same level as compared to the previous month as well as to the level recorded in August 2014.

The number of unemployed (aged 15-74 years) estimated for August current year is of 626 thousand persons, decreasing as compared to the previous month (630 thousand persons) as well as compared to the same month of the previous year (627 thousand persons).

Number of unemployed during August 2013 - August 2015 period



^P Provisional series; will be revised at the end of November 2015 (see point 6 in [Methodological explanations](#)).

[Chart data \(xls\)](#)

According to the breakdown by gender, men's unemployment rate is with 2.2 percentage points higher than that of women (the values concerned are 7.8% for men and 5.6% for women).

Unemployment rate by gender (%)

	2014					2015							
	Aug.	Sept.	Oct.	Nov.	Dec.	Jan.	Feb.	Mar.	Apr.	May	Jun.	Jul. ^P	Aug. ^P
Total													
15-74 years	6.8	6.7	6.7	6.7	6.6	6.9	6.9	6.8	6.8	6.8	6.8	6.8	6.8
25-74 years	5.4	5.4	5.3	5.4	5.2	5.5	5.5	5.4	5.6	5.6	5.6	5.6	5.6
Male													
15-74 years	7.3	7.1	7.1	7.1	6.9	7.5	7.5	7.4	7.6	7.6	7.6	7.8	7.8
25-74 years	5.9	5.8	5.8	5.8	5.7	6.1	6.1	6.1	6.4	6.4	6.4	6.5	6.6
Female													
15-74 years	6.1	6.1	6.1	6.1	6.1	6.1	6.0	6.0	5.8	5.8	5.7	5.6	5.6
25-74 years	4.8	4.8	4.7	4.8	4.7	4.7	4.7	4.6	4.6	4.5	4.4	4.4	4.4

^P Provisional series; will be revised at the end of November 2015 (see point 6 in [Methodological explanations](#)).

[Table data \(xls\)](#)

The unemployment rate of adult persons (aged 25-74 years) was estimated at 5.6% for August 2015 (6.6% in the case of men and 4.4% in that of women's).

The number of unemployed aged 25-74 years accounts for 77.1% of the total number of unemployed estimated for August 2015.

Additional information:

For an accurate interpretation of the indicators, please see the [Methodological explanations](#).

Monthly data on the number of unemployed and the unemployment rate with monthly periodicity according to international definition (ILO) can also be obtained from the publication "Monthly Statistical Bulletin No. 8/2015".

The next press release, which will include the estimates for September 2015, will be issued on the 30st of October 2015.

Press release archive: <http://www.insse.ro/cms/en/content/press-releases>.

Communication Department

e-mail: biroupresa@insse.ro

Tel: +4021 3181869